

May 2025

Cibolo Creek Quilters Guild

Our Mission: A non-profit 501(c)(3) organization celebrating traditional, modern, and artistic quilting. We promote and advance the art of quilting by exchanging ideas on all aspects of quilting to include teaching and improving our skill techniques, as well as supporting our community with charitable quilts, service projects and events.



MAY MEETING FUN

Mondo Bags by Lorey Wing

The Applique Bee will be bringing their Challenge Blocks to our meeting, where you get to vote for your favorite! Please come to see what your fellow quilters have made!

Extended Sew & Tell – Bring your favorite applique piece along with any other of your usual quilted creations.

GUILD FACEBOOK PAGE IS UP!!!!

We are trying to establish a social media presence to promote the guild and sell quilts. Please friend Gilda Sowers, our “member” in charge of the page or search for Cibolo Creek Quilters and select the page with our logo. Please follow and share the link to help us sell quilts!

RAFFLE QUILT TICKET SALES OPPORTUNITIES

- Saturday, August 8 – Greater San Antonio Quilt Guild. Contact Jennifer H. to volunteer.

Upcoming Events

May 8

Lorey Wing-Mondo Bags
Voting for Applique Bee Challenge Blocks

May 9

Lorey Wing-Mondo and Midi Bags Workshop

June 12

Members' Summer Ice Cream Social

June 13

Sew Along – Longhorn Café

July 10

Sleep in Heavenly Peace Coordinator
Donations Update
Extended Sew & Tell-Show us your works of art

August 14

Linda Heatherly – FMQ

September 11

Donna Phelps – Orphan Quilts/Turn random, leftover blocks, bits, and pieces into beautiful quilts (workshop to be offered in near future)

October 9

Extended Sew & Tell – Bring in your Halloween Quilts

November 13

TBD

November 14

Donna Phelps – Create your own Orphan Quilt

December 11

Member Appreciation

[Schedule subject to change](#)

Mondo Bag Workshop

May 9

Patrick Heath Public Library

Upstairs Conference Room

11:00 AM – 4:00 PM

A little about Lorey Wing - The year Lorey was born, her mother purchased a Singer Featherweight on which she sewed clothes for herself and Lorey: everything from mother-daughter outfits to prom dresses. Although Lorey didn't inherit her mother's garment-making skills - zippers terrified her and her junior high home economics "skirt" was a mess - as a young married woman, she became adept at making curtains, decorative pillows, bed skirts, and duvet covers. Life was good in the home decorating arena.

But Lorey really wanted to make a quilt, and she was envious of her friends who were making beautiful quilts. She sewed her first quilt, a baby quilt, in 2017. A kind and generous longarm quilter in Spring, TX made it look beautiful. Since then, Lorey has made more than 20 quilts including a vintage linens quilt, 5 T-shirt quilts, a Quilt of Valor and more just plain fun quilts than she can count. She got hooked on the Mondo Bag because it is easy to put together and looks fabulous! She's excited to share what she has learned about making Mondo bags with Cibolo Creek Quilters Guild members and looks forward to the workshop on May 9th.

Members: \$35

Nonmembers: \$65

Need access to the storage unit to pick out some fabric for a project? Contact current key holders Jennifer H., Sharon R., and Bonnie W. for access.

Member Notes

Board meetings are scheduled as follows, and you are welcome to attend: Tuesday June 3, 10-11:30, PHPL Conference Room

If you are not a Board Member but would like to come, please contact Jennifer Hill (jennifer.m.hill@icloud.com) to make sure day/time/location has not changed.

Copies of the monthly newsletter, guild meeting minutes, treasurer's reports, and board meeting minutes are available on the CCQG website at cibolocreekquiltersguild.org.

May Birthdays

Donna F.
AnnLea M.
Carann E
Marty T

TICKETS

The Board has decided to discontinue distribution and consider other options to encourage participation in guild volunteer opportunities. Please bring in any tickets you've been holding to the May and June meetings. We will do a drawing in June. December Member Appreciation Prizes will be distributed with one chance per member, and you do not need to be present to win.

Officers

President – Jennifer Hill

President pro tem (Fundraising) – open

1st VP (Programs) – Andrea

Friend, Carol Lunday, Cyndi Snyder

2nd VP (Membership) – Cathy Pineda

Secretary – Carol Schultz

Treasurer – Bonnie Walshe

Committee Chairs

Charity Coordinator – Sharon Reis and Lajuana Kubany

Happy Scrappers Bee (Charity quilts) – Bonnie Walshe

Public Relations - Karen Walsemann

Applique Bee – Judi Burr

Newsletter – Cyndi Snyder

Publicity – Karen Walsemann

Quilts of Honor – Polly Sparks

Retreats – Judi Burr

BEES



Everyone is invited to participate in our monthly bee gatherings. No experience is required. These are opportunities to get together with friends, share ideas, learn new things, and collaborate on projects.

Applique Bee: Regular meetings have resumed and take place on the third Thursday of the month at 10:00 a.m. at Longhorn Café. Contact Judi Burr (appr216@yahoo.com) for information. She will update you on the location of the upcoming meetings.

Voting for Applique Bee Challenge Blocks at May meeting.

Happy Scrappers: Meets the first Wednesday of the month, 9:00 a.m. – 12:00 p.m. at The Center in Boerne. This group works together on quilts that are later donated to our local charities. We need volunteers to sew, cut, or iron. Contact Bonnie Walshe (brwalshe@gvtc.com) for more information.

Sew and Sews (Bulverde): Meets the second and fourth Wednesday of each month, 1:00 p.m.- 5:00 p.m. at the Hidden Trails Amenity Center. This group works together and independently on all types of projects, many of which are quilts that are donated to local charities. Contact Donna Adkins (profadkins9961@yahoo.com) for more information.

Heidi Staples Workshop

On April 11, Heidi Staples led a workshop on how to make an adorable souvenir clutch from her Patchwork USA book. It was so much fun meeting Heidi and we all had so much fun. Check out her blog and social presence on Instagram (<https://fabricmutt.blogspot.com/> <https://www.instagram.com/fabricmutt/>)



CHARITY QUILT DISTRIBUTION

The Q1 2025 charitable deliveries are as follows:

Town & Country Nursing and Rehab - 26 total



Walker Bags - 8
Clothing Protectors - 8
Wheelchair quilts - 4
Lap quilts - 6

Cibolo Creek Nursing & Rehab - 17 total

Walker Bags - 8
Wheelchair quilts - 4
Lap quilts - 5

Kendall Counts Women's Shelter - 19 total



Lap Quilts – 4
Youth quilts – 3
Baby quilts – 12

Hill Country Pregnancy - 12 total

Baby - 12

The Cibolo House at Menger Springs - 24 total

Clothing Protectors - 24
Walker Bags - 8

Total items delivered: 98

Updated Donation Form

The donation form has been updated as of April 2025 and is available on our website. Please ensure that each quilt submitted for donation or sale must have one of these forms completed and attached. Please note that there are two forms per sheet.

Tracking # _____

Cibolo Creek Quilters Guild (CCQG) Donation Submission Form

Date Submitted: _____ **For:** donation: _____ sale: _____

Charity Recipient: General: _____ or **Specific:** (if specific, please select below)

_____ Cibolo Creek Nursing & Rehab Center _____ Hill Country Pregnancy Care Center

_____ Town & Country Nursing & Rehab Center _____ Quilts of Honor

_____ Kendall County Women's Shelter Other: _____

Names of all parties assembling quilt to completion (sewist, quilter, binder, etc.)

Item:

_____ Adult lap quilt _____ Wheelchair quilt

_____ Teen lap quilt _____ Baby/Toddler (example: activity mat, cuddle quilts)

_____ Clothing protector _____ Twin size quilt

_____ Neck warmer _____ Quilt of Honor

_____ Walker bag _____ Other (description) _____

Revised: April 1, 2025

Tracking # _____

Cibolo Creek Quilters Guild (CCQG) Donation Submission Form

Date Submitted: _____ **For:** donation: _____ sale: _____

Charity Recipient: General: _____ or **Specific:** (if specific, please select below)

_____ Cibolo Creek Nursing & Rehab Center _____ Hill Country Pregnancy Care Center

_____ Town & Country Nursing & Rehab Center _____ Quilts of Honor

_____ Kendall County Women's Shelter Other: _____

Names of all parties assembling quilt to completion (sewist, quilter, binder, etc.)

Item:

_____ Adult lap quilt _____ Wheelchair quilt

_____ Teen lap quilt _____ Baby/Toddler (example: activity mat, cuddle quilts)

_____ Clothing protector _____ Twin size quilt

_____ Neck warmer _____ Quilt of Honor

_____ Walker bag _____ Other (description) _____

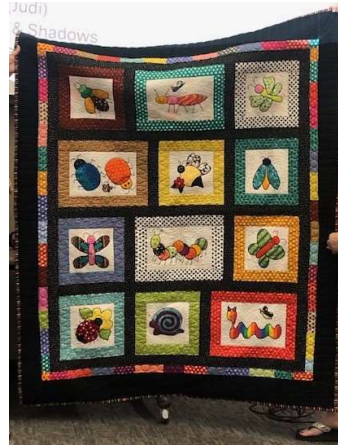
Revised: April 1, 2025

SEW & TELL – APRIL 2025

Correction – These lovely quilts were shown at our March Meeting and credited incorrectly. Thank you Jennifer G for sharing your lovely work.



Lara B



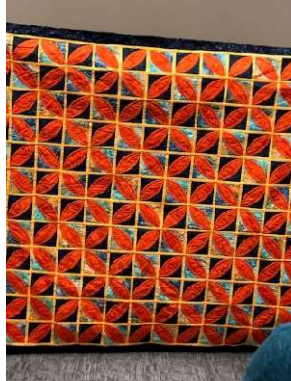
Ann A



Carol L



Jean B



SEW & TELL – Continued

Mary T



Linda H



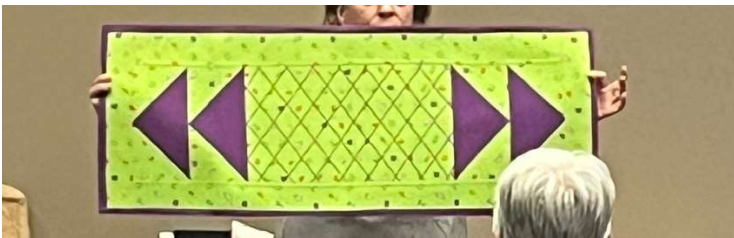
Amy T



Carolyn S



Joyce H



Lisa A



***Our apologies for missing Elaine S and Gail B's contributions-it got a little chaotic and we it was realized no one got pictures.

MONDO BAG

A great bag for taking quilts to the guild for show and tell!

In this class, you will learn how to machine piece a Mondo or Midi bag. The Quiltsmart Mondo Bag or The Quiltsmart Midi Bag pattern by Mattie Rhoades is required for this workshop.

- Uptown Blanco Textile Studio – sells both the Mondo and Midi patterns
- Sew Special – sells both the Mondo and Midi patterns
- Sew It Fabulous – sells the Midi pattern

[Mondo Bag](#) - Bag bottom is about 10" square with 15" tall sides and **features an interior pocket.**

[Midi Bag](#) - Bag bottom is about 8" square x 12" tall sides.

Use 100% cotton quilt fabrics for best results.

Mondo Bag Yardage Required:

Body

- 192 Outer 2.5" Squares & 2 - 2 ½ x 26" strips for the outer handle fabric OR
- 20 - 2 ½" Strips at least 40" WOF – in a variety of fabrics or a jelly roll. This yardage includes the outer handle fabric.

Lining: 1.25 yards of fabric for bag lining **and** 2 - 2 ½ x 26" strips for the lining handle fabric.

Fusible Fleece or Soft & Stable: 1.25 yards of Fusible Fleece. If you would like for your bag to have more structure, you may use Soft & Stable.

Midi Bag Yardage Required:

Body

- 108 – 2 ½" squares and 2 – 2" x 23" outer fabric handles OR
- 8-10 – 2 1/2" x WOF strips or a jelly roll and 2 – 2":x 23" outer fabric handles
(5 fat quarters will make 1 bag, lining and handles included)

Lining: ¾ yard of fabric for bag lining and 2 – 2":x 23" lining fabric handles

Fusible Fleece or Soft & Stable: ¾ yard of Fusible Fleece

Supplies Required:

- Sewing machine
- 1/4-inch presser foot
- Sewing machine thread. You may want to use a contrasting bobbin for top stitching.
- Sewing machine needles (just in case)
- Rotary cutter and cutting mat
- Either a 12" or 24" ruler
- Pins or Wonder Clips
- Seam ripper and scissors

Helpful Tools

- Applique pressing sheet or parchment paper
- Fasturn #6 (for handles).

MONDO BAG

Make Ahead of Class at Home

(Please make sure you're prepared prior to class unless you plan on finishing at home)

1. Pre - cut 192 - 2 ½" squares if making a Mondo bag.
2. Pre – cut 108 2 ½" squares if making a Midi bag

A 12" rotating cutting mat is helpful if using charm squares.

Suggestions for color success.

Cut 1 – 5" charm into 4 - 2 ½" squares and begin making 4 separate stacks. Cut the charms 1 at a time so that you can retain the color flow of the charm pack when making the separate stacks. You will use one stack for each grided panel. This will help the 4 outer panels of the bag color flow.

Make your Handles

- From your lining fabric cut 2 – 2 ½" x 26" strips for the Mondo bag or 2 – 2" x 23" handles for the Midi bag.
- From your fusible fleece cut 2 – 2 ½" x 26" strips for the Mondo bag or 2 – 2" x 23" handles for the Midi bag.
- From your coordinating outer fabric cut 2 – 2 ½" x 26" strips for the Mondo bag or 2 – 2" x 23" handles for the Midi bag.

Fuse the fleece strips to the **WRONG** side of the 2 lining handle strips. Place the right side of one fleece/lining strip together with the right side of the coordinating outer fabric strip. Stitch the long edges using a ¼" seam allowance. Repeat for the second handle. If you have a Fasturn, or another way to turn the handles right sides out, proceed. (If you do not, bring your stitched handles to class to turn them right side out there.) Press the handles. Top stitch the edges. Here's where you might want to use a contrasting thread in your bobbin for the lining.

Cut your lining

If you are making a Mondo bag:

- Cut 3 lining panels 8 ½" x 24 ½"
- Cut a fourth lining panel 8 ½" by WOF. This will be your pocket panel.
- Cut 3 fusible fleece panels 8 ½" x 24 ½" and fuse to the **WRONG** side of the lining
- Cut a fourth fusible fleece panel 8 ½" x 24 ½" for the pocket panel. **DO NOT FUSE YET.**

If you are making a Midi bag:

- Cut 4 lining panels 6 ½" x 18 ½"
- Cut 4 fusible fleece panels 6 ½" x 18 ½" and fuse to the **WRONG** side of the lining.